



Interfaith Community Services

Recuperative Care Facility

P
R
O
J
E
C
T

P
R
O
F
I
L
E

Address: 250 N. Ash Street
Escondido, California

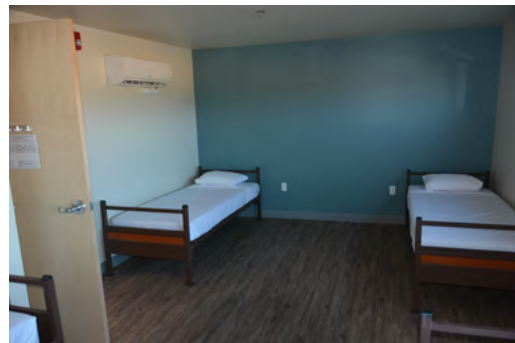
Square Footage: 10,000 sf

Scope of Work: A structural rebuild of an abandoned wood framed medical arts facility and conversion into a recuperative care facility for homeless veterans. The project was a complete reconstruction of the building shell, roof, second floor, interior structural elements and sheer envelope. A complete removal and reconstruction of the mechanical, electrical, and plumbing systems were also incorporated into the project along with a new exterior elevator and tower. The exterior improvements included a total makeover of the site including ADA accommodations, a new parking lot, hardscape patios and trellises.

Features: • New Elevator • Exterior and interior stairwells • New HVAC system • Seismic retrofit • ADA upgrades • Dining Hall and kitchen

Project Cost: \$2.7 million

Designer:
Project Architect/ Ware Malcomb



Johnson & Jennings General Contracting
6165 Greenwich Drive Suite 180
San Diego, California 92122
www.johnsonandjennings.com
(858) 623-1100